

# THE SMARTER PRINTING OPTION FOR TABLET POS SYSTEMS

**No. 1** EUROPE'S LEADING POS PRINTER MANUFACTURER\*  
\*Source: Interconnection Consulting 2014



For retail businesses looking to move to a tablet POS system that is affordable and easy to install, the TM-m30 tablet POS printer from Epson is the ideal choice. Thanks to ePOS-Print<sup>1</sup> SDK, the TM-m30 easily communicates with web-based applications, ensuring receipts can be printed quickly and efficiently from any mobile device.



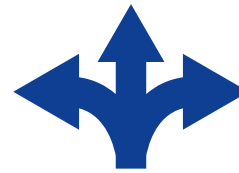
## Stylishly compact

Sleek, stylish and compact, the TM-m30 is one of the smallest POS printers in the world<sup>2</sup>. Its size means it can be placed almost anywhere, making it perfect for any retail environment and especially those with limited space. Available in black or white, it can be used as a top or front access printer.



## Easy to install

Print directly from any smart device with ePOS-Print on both iOS and Android systems. Additional Ethernet, Bluetooth, USB and Wi-Fi connectivity are available.



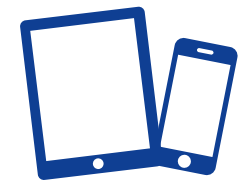
## Adaptable

Quickly and easily customise receipts with logos and promotional messages. Advance graphics and barcodes using high-quality, multiple greyscale printing are also fast and simple to produce.



## Paper saving

Using backward paper feeding, or printing the logo when the receipt is cut, can shorten receipt lengths reducing paper costs and consumption by up to 30%.



## Connectable

A single printer can be dynamically shared across multiple tablets with different interfaces.

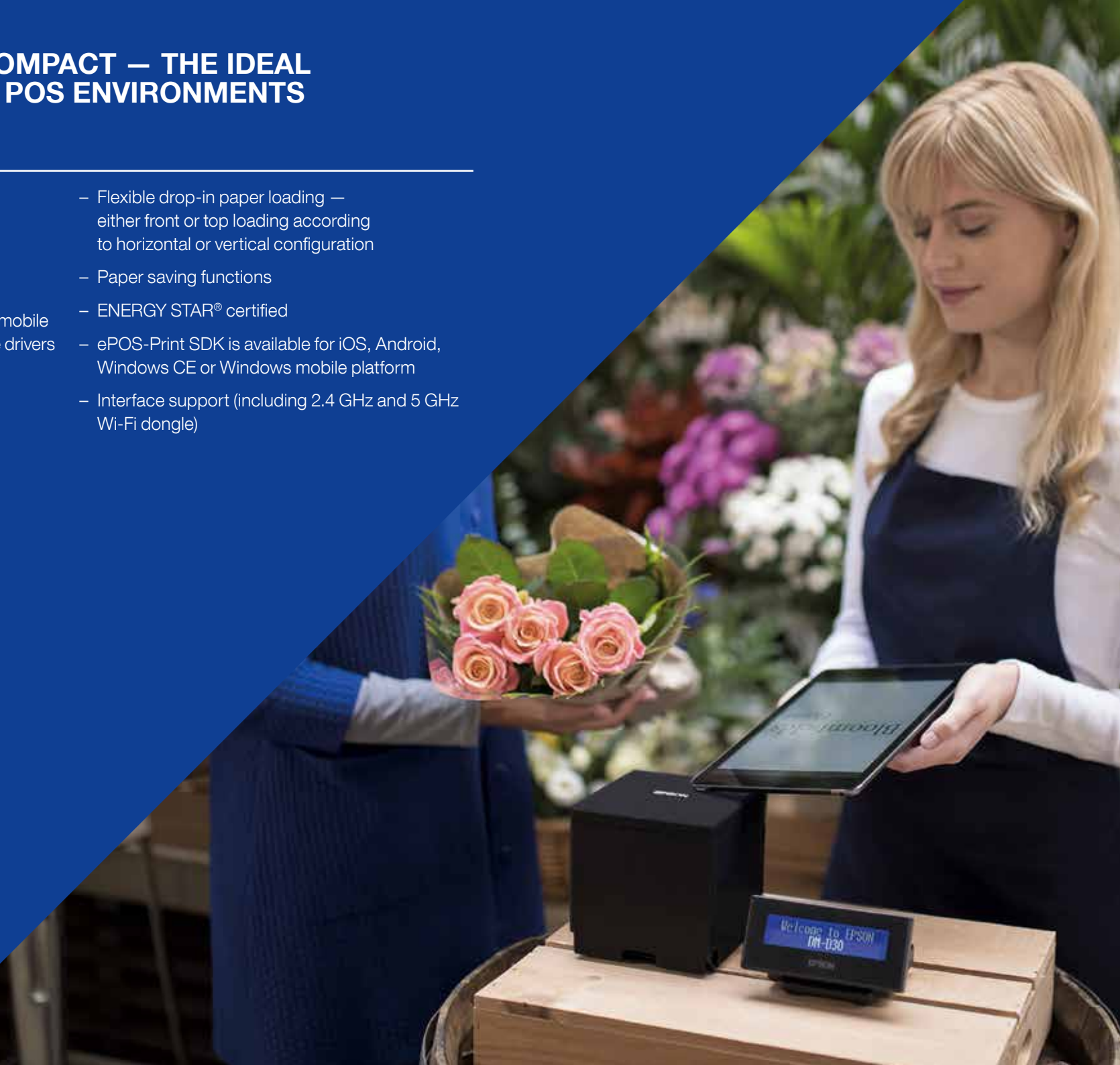


# SLEEK, STYLISH AND COMPACT — THE IDEAL SOLUTION FOR TABLET POS ENVIRONMENTS

## Key features

---

- Sleek, compact and stylish design
- Flexible placement — place horizontally or vertically
- NFC and QR code pairing
- ePOS-Print allows direct printing from any mobile device without the need to install or update drivers
- Print speed of up to 200mm/sec
- High-quality receipt printouts
- Flexible drop-in paper loading — either front or top loading according to horizontal or vertical configuration
- Paper saving functions
- ENERGY STAR® certified
- ePOS-Print SDK is available for iOS, Android, Windows CE or Windows mobile platform
- Interface support (including 2.4 GHz and 5 GHz Wi-Fi dongle)



## CONVENIENT, INTUITIVE TECHNOLOGY



### Direct printing from web browsers

Epson's innovative ePOS-Print technology means the TM-m30 can quickly, easily and seamlessly integrate with any PC, tablet, laptop or mobile device via a Wi-Fi or Bluetooth interface. Whether the device is running iOS, Android, Windows CE or Windows mobile, direct printing from the web browser becomes possible without the need to install or update any other drivers.



### Easy pairing with mobile devices

NFC connectivity (Near Field Communication), means the TM-m30 can be easily paired with tablets and smartphones. Simply bring the devices close together to make the connection. For added convenience and flexibility, pairing by QR code is also possible.



### Simple set-up using Wi-Fi

The 'Easy Setting Functionality' on the TM-m30 creates an access point for connecting smart devices. Once implemented, both devices can be easily set-up and configured on a wireless network for instant use.

## OPTIONAL ACCESSORIES



### Customer display DM-D30

Designed to match the dimensions and colours of the TM-m30 printer, the DM-D30 customer display retains a stylish, integrated look and feel when in use. This adaptable option can be connected to the printer via the USB A port and, if a Wi-Fi dongle is required on the TM-m30, this can be invisibly connected behind the DM-D30.



### Tablet stand

Used with the DM-D30 display, this creates an efficient, stylish and fixed till point, with a secure locking system that requires minimal space to operate effectively.



### Wall mounting bracket

Mount the printer quickly and securely to any wall or vertical surface with the optional wall mounting bracket. By simply swapping just two printer covers, the TM-m30 converts from a horizontal to a vertical solution, maximising space even in the smallest retail environments.



## SPECIFICATIONS

<b>Dimensions</b>	127 × 127 × 127mm
<b>Weight</b>	1,200g
<b>Colour</b>	Epson Black, Epson Ultra White
<b>Print method</b>	Thermal
<b>Print speed</b>	200mm/sec
<b>Print resolution</b>	203 × 203dpi
<b>Media</b>	Thermal roll paper
<b>Paper loading</b>	Drop-in
<b>Roll diameter</b>	83mm
<b>Autocutter</b>	Yes
<b>Connectivity</b>	Ethernet, Bluetooth, Wi-Fi (USB connectivity available on Ethernet and Bluetooth models)
<b>Mobile</b>	iOS, Android, Windows
<b>Reliability</b>	Printer – 15 million printing lines Autocutter – 1.5 million cuts
<b>Driver</b>	ePOS-Print SDK OPOS ADK, OPOS ADK for .net JavaPOS ADK, Epson APD, Mac Driver



<sup>1</sup>Patent pending. <sup>2</sup>As compared in August 2015. Dimensions of comparable products taken from manufacturers' websites.

For further information please contact your local Epson office or visit [www.epson-europe.com](http://www.epson-europe.com)

**Austria** 01 253 49 78 333 **Belgium** +32 (0)2 792 04 47 **Czech** 800/142 052 **Denmark** 44 50 85 85 **Finland** 0201 552 091 **France** 09 74 75 04 04 (Cost of local call, operator charges may apply) **Germany** +49 (0) 2159/92 79 500 **Greece** 210-8099499 **Hungary** 06800 147 83 **Ireland** 01 436 7742 **Italy** 02-660321 10 (0,12 €/min) **Luxembourg** +352 27860692 **Middle East** +9714 8872172 **Netherlands** +31 (0)20 708 5099 **Norway** +47 67 11 37 00 **Poland** 0-0-800 4911299 (0,16 zł/min) **Portugal** 707 222 111 **Russia** (095) 777-03-55 **Slovakia** 0850 111 429 **South Africa** (+2711) 465-9621 **Spain** 93 582 15 00 **Sweden** 0771-400135 (Mobilsamtal – 0,99 kr/min, Lokala samtal – 0,30 kr/min, Utlandssamtal – 0,89 kr/min) **Switzerland** 022 592 7923 **Turkey** (0212) 3360303 **United Kingdom** 0871 222 6702

Trademarks and registered trademarks are the property of Seiko Epson Corporation or their respective owners. Product information is subject to change without prior notice.

# EPSON®